

# City of St. Petersburg Stormwater Master Plan

CONA Meeting  
October 20, 2021





# Stormwater Master Plan

## The Stormwater Master Plan (SMP) is

- City-wide
- A long-term vision document which is dynamic
- A blueprint to address storm water flooding and water quality issues
- A guide to major capital investments
- A plan to identify ways to improve stormwater
- Plans for sea level rise resiliency





# Stormwater Master Plan

- **The SMP is an element of the St Pete Water Plan and provides an overall plan that complies with regulations:**

Potable Water	Reclaimed Water	Wastewater	Stormwater	Runoff quantity & quality
---------------	-----------------	------------	------------	---------------------------

- Develop a comprehensive approach to address aging assets.
- Develop a methodology and sequence for capital investments.
- Incorporate sustainability and resiliency.
- Create regulatory compliance strategies for existing and proposed future regulatory requirements.

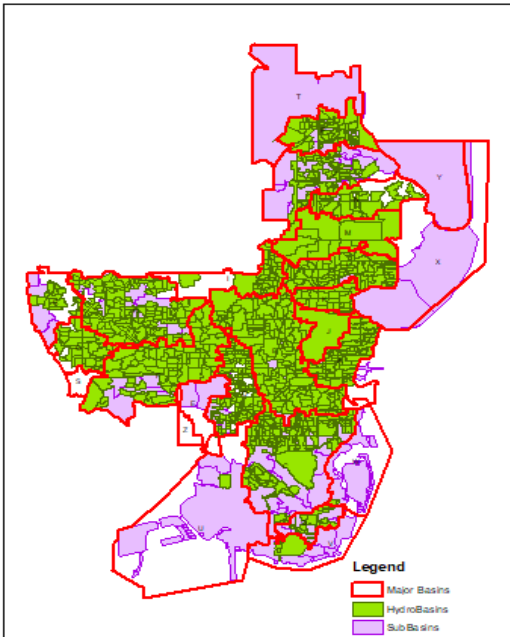


# How long is our system and how complex is it?

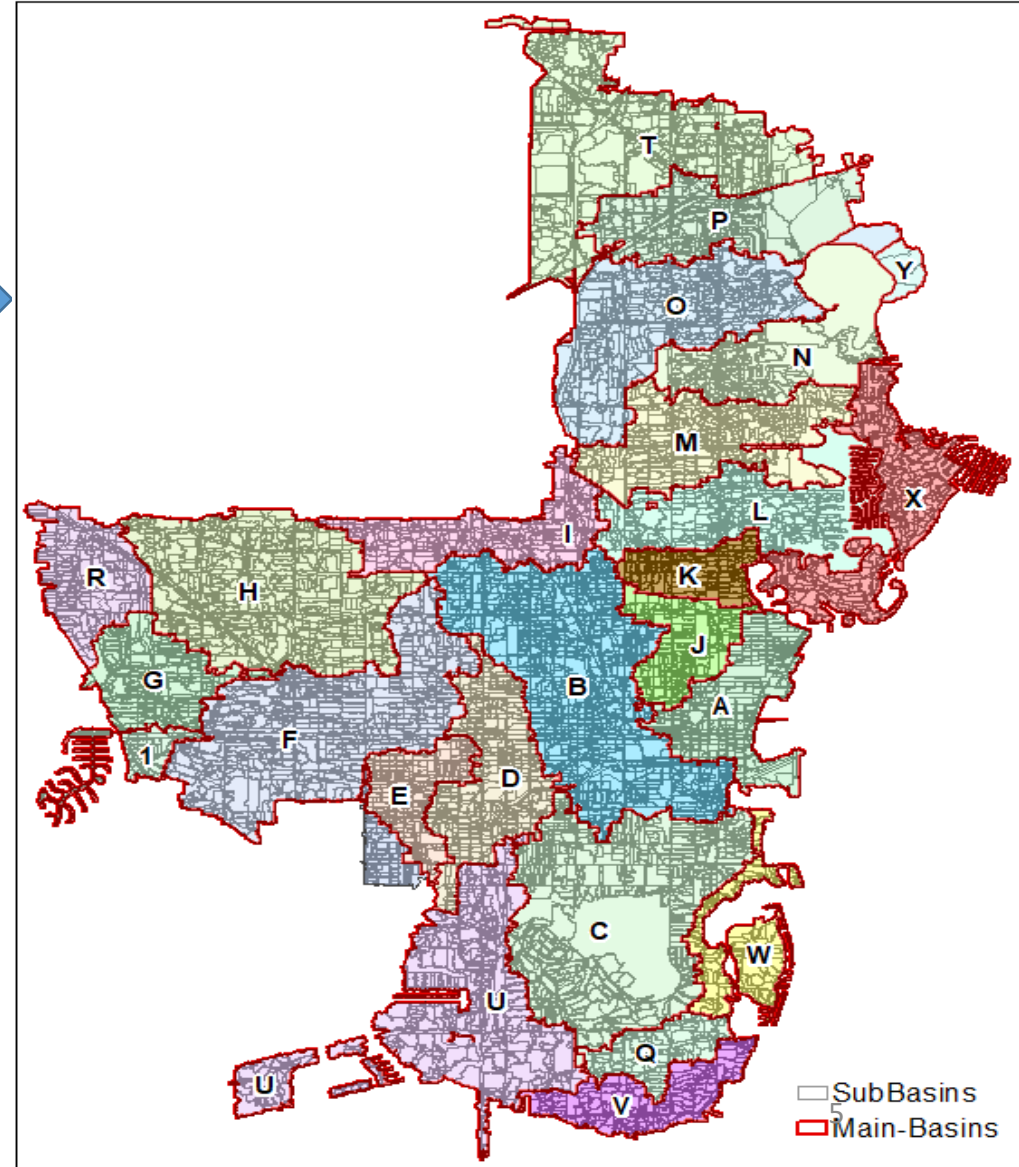
- The SMP computer model is 10 times more detailed than the 1994 model due to advances in stormwater modelling software in the past 30 years

Stormwater Master Plan	1994	Current
Total Model SubBasins	1,186	12,628

Basin ID	MODEL FEATURES				
	SubBasins	Channel	Pipe	Drop Structures	Weirs
A	665	0	988	28	1643
B	1847	25	3014	79	5011
C	948	48	1261	21	2605
D	662	6	979	30	1724
E	381	23	548	15	997
F	888	56	1552	39	2486
G	416	23	560	12	1112
H	750	72	1427	75	2273
I	392	0	890	16	1183
J	358	0	575	5	990
K	220	1	392	16	690
L	391	23	838	17	1257
M	554	5	1076	22	1658
N	266	16	466	14	1000
O	563	91	1055	36	3025
P	384	81	507	85	2256
Q	137	9	272	14	391
R	338	8	433	27	926
S	203	0	235	2	512
T	645	193	967	78	3750
U	609	49	981	72	1782
V	232	2	504	7	708
W	171	0	346	4	463
X	424	12	822	11	1180
Y	4	0	0	0	20
Z	180	0	248	6	479
<b>Total</b>	12628	743	20936	731	40121



- A new detailed and more indicate model was develop for the City
- More accurate asset and field information
- More accurate data:
  - Pinellas County 2018 LiDAR
  - City, County, and State project plans
  - Field survey of 2200 assets to supplement LiDAR data





Example – Snell Isle Blvd. NE.

Outfall Construction at Jungle Lake



Jungle Lake clearing, grubbing, preliminary excavation.



## Example – Jungle Lake



# Stormwater Master Plan

## Public Meeting Sessions

### City Presentations for Public

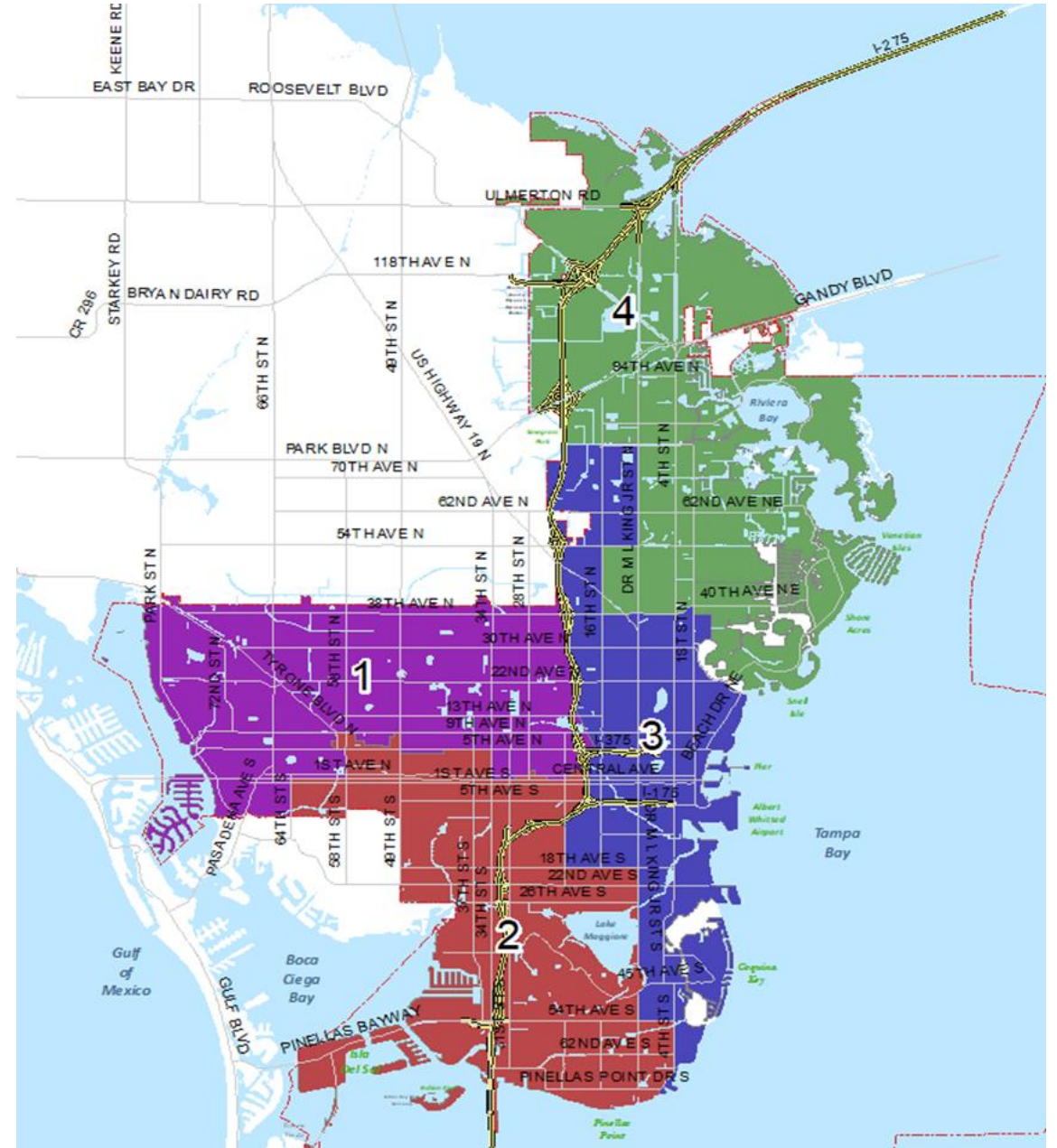
- December 06, 2021 : Section 1 (Districts 1&8)
- December 07, 2021 : Section 2 (Districts 5&7)
- December 13, 2021 : Section 3 (Districts 4&6)
- December 14, 2021 : Section 4 (Districts 2&3)

### Public Outreach November 2021

- Notice in utility bill
- Announce See Click Fix flooding
- Reporting App on Stormwater website

### Committee of the Whole January 2022

- Update Council on feedback and Level of Service
- Provide recommendations for Code and Ordinance Updates





Thank you, please find more details at  
the Project Website –  
[www.stpete.org/StormwaterMasterPlan](http://www.stpete.org/StormwaterMasterPlan)



Engineering & Capital Improvements  
City of St. Petersburg  
[www.stpete.org](http://www.stpete.org)